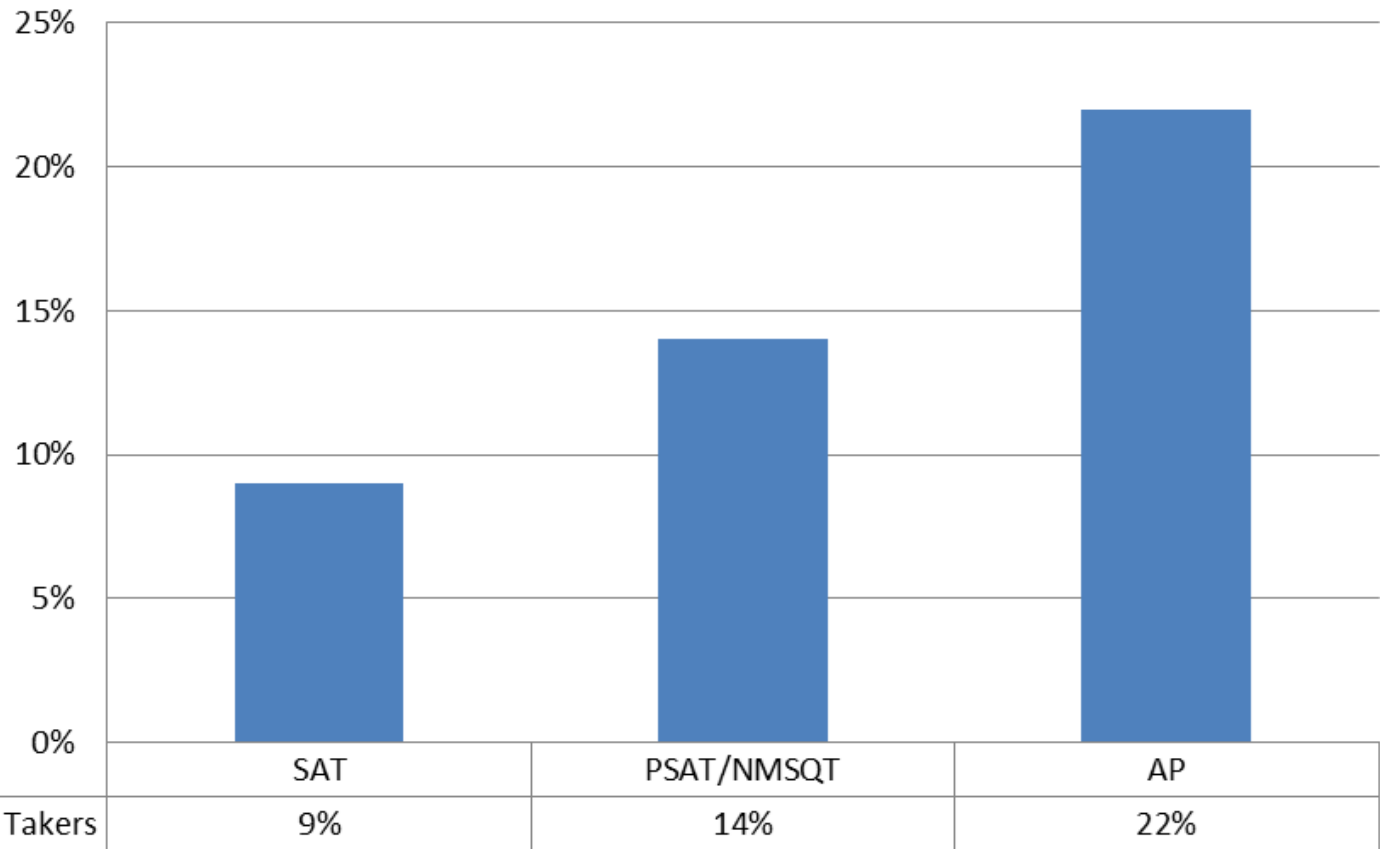
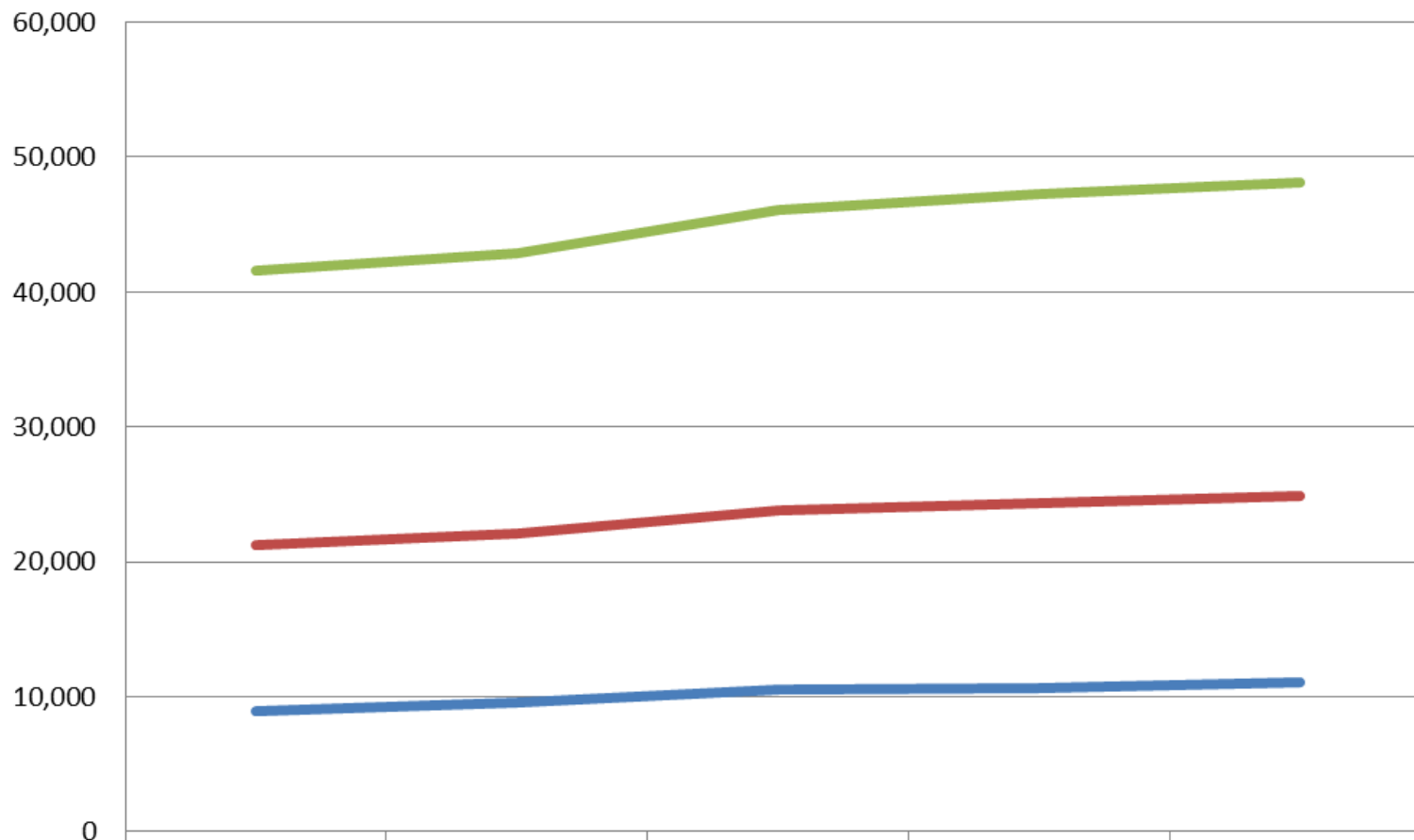


# Percent of Test Takers Using College Board Fee Waivers



# Advanced Placement

## Five-Year Trends in Advanced Placement

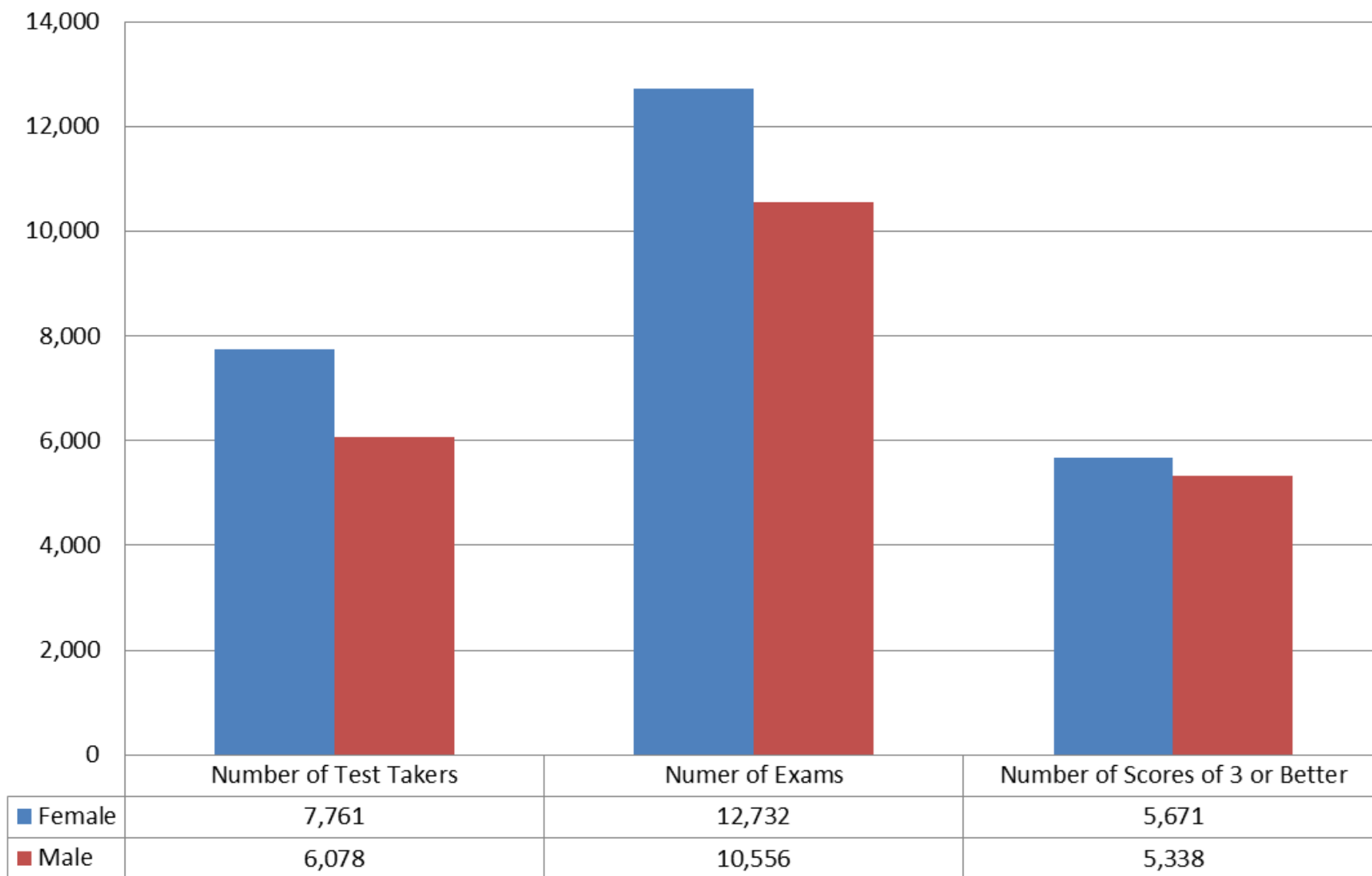


	2008	2009	2010	2011	2012
Exams	20,380	20,811	22,244	22,883	23,288
Students	12,307	12,508	13,316	13,777	13,839
Scores of 3, 4, or 5	8,876	9,598	10,517	10,579	11,009

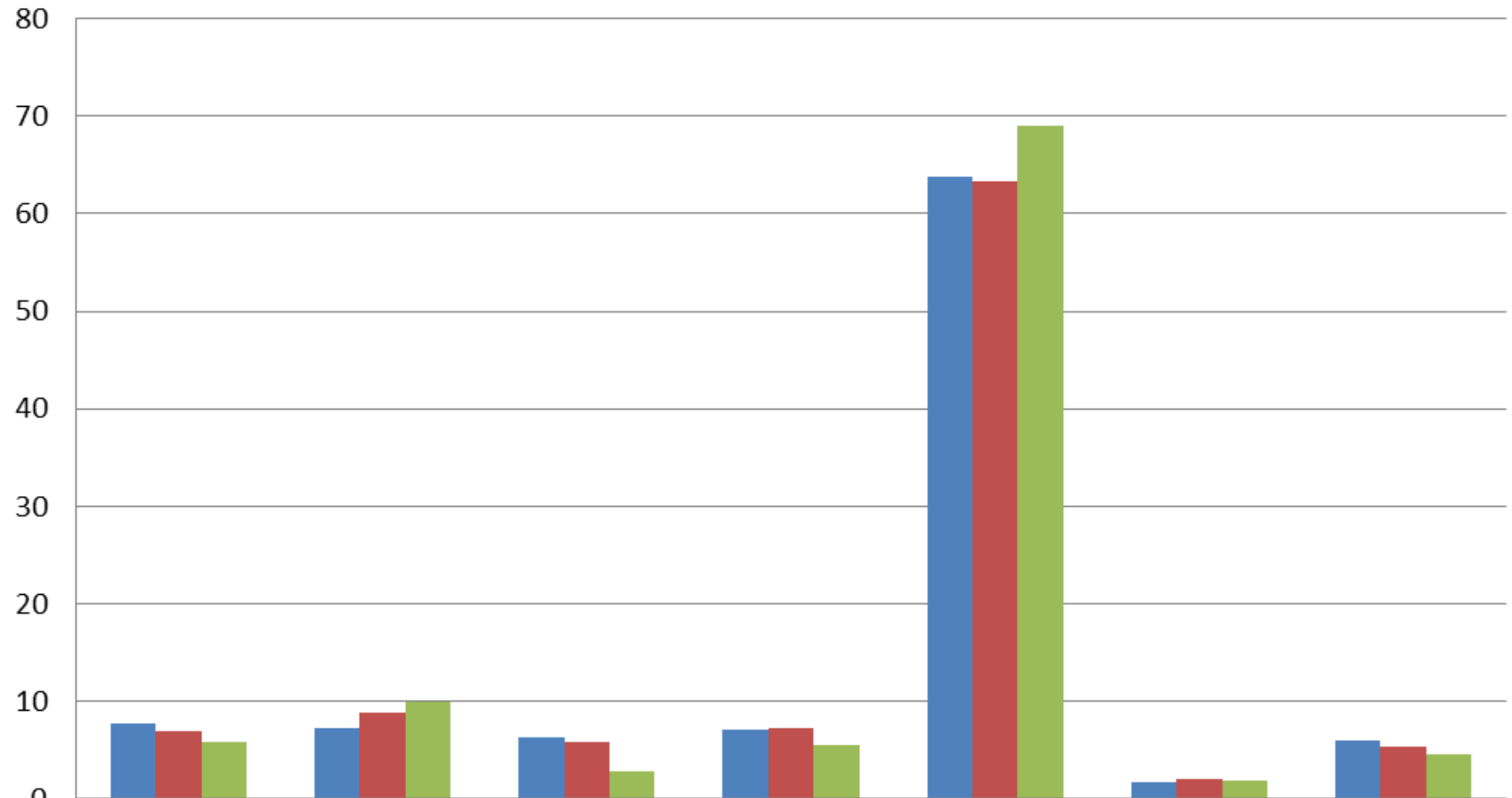
# 2012 Advanced Placement by Ethnicity

	Exam Takers	Exams Taken	Score of 3 or Better
American Indian	1,060	1,647	658
Asian	993	2,040	1,089
Black	890	1,347	322
Hispanic	982	1,669	621
White	8,837	14846	7,602
Other	248	455	213
No Response	829	1,244	504

## 2012 Advanced Placement by Gender



## 2012 Advanced Placement by Ethnicity



	American Indian	Asian	Black	Hispanic	White	Other	No Response
■ % of Test Takers	7.7	7.2	6.4	7.1	63.8	1.8	6
■ % of Exams	7	8.8	5.9	7.2	63.4	2	5.3
■ % of 3 or Better	5.9	9.9	2.9	5.6	69	1.9	4.6

PSAT/NMSQT

Total Sophomore Test Takers	Mean Critical Reading		Mean Mathematics		Mean Writing	
<b>6,262</b>	State	Nation	State	Nation	State	Nation
	45.8	42.3	44.6	42.4	42.3	40.1
Total Junior Test Takers	Mean Critical Reading		Mean Mathematics		Mean Writing	
<b>6,434</b>	State	Nation	State	Nation	State	Nation
	51.3	47.0	50.8	47.8	48.2	44.7



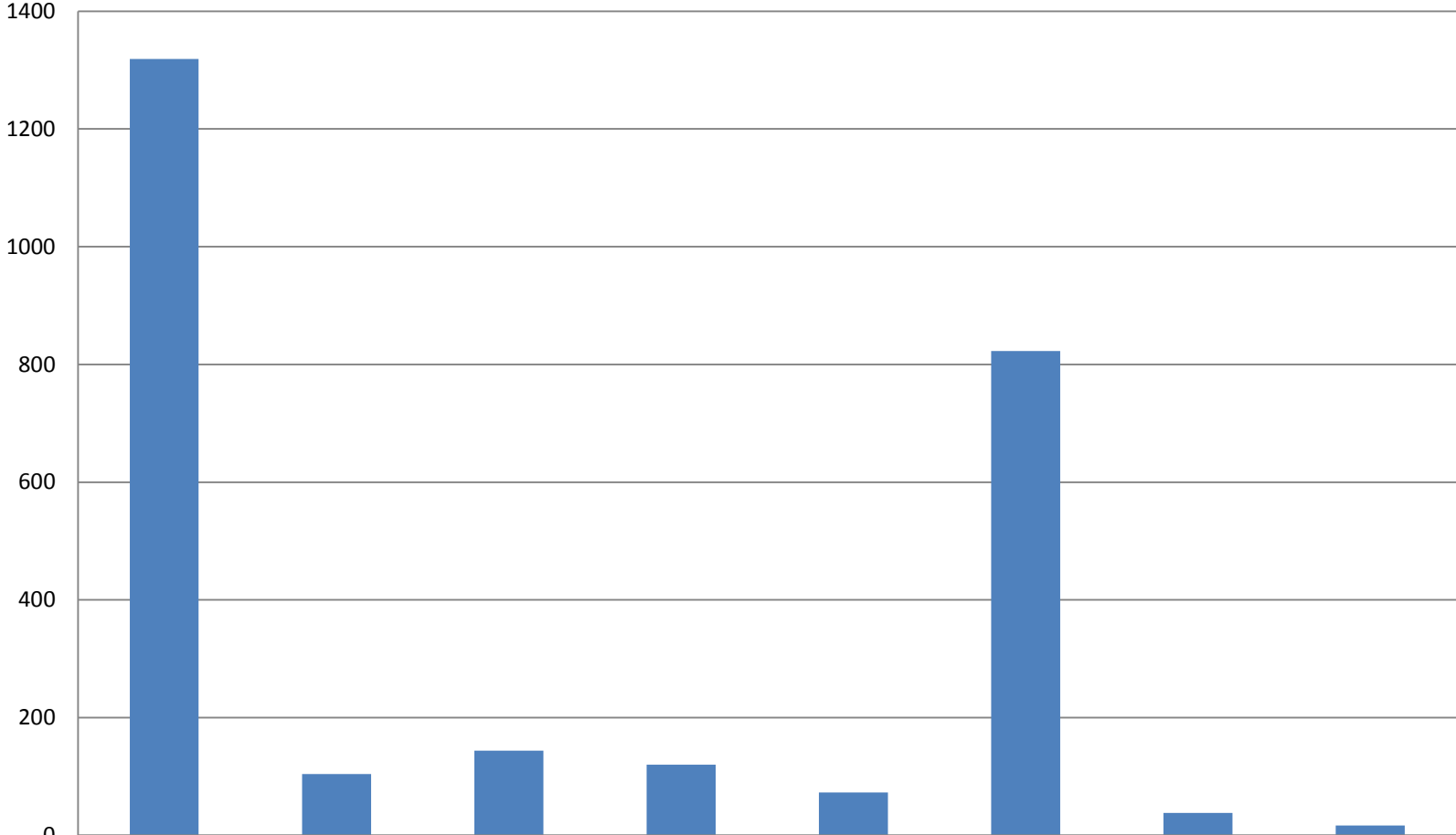
Sophomore Test Takers by Gender		Mean Critical Reading		Mean Mathematics		Mean Writing	
<b>Female</b> <b>3,336</b>	State	Nation	State	Nation	State	Nation	
	<b>46.5</b>	43.2	<b>43.9</b>	42.0	<b>43.1</b>	41.1	
<b>Male</b> <b>2,891</b>	State	Nation	State	Nation	State	Nation	
	<b>45.1</b>	41.5	<b>45.5</b>	43.0	<b>41.5</b>	39.0	
Junior Test Takers by Gender		Mean Critical Reading		Mean Mathematics		Mean Writing	
<b>Female</b> <b>3,687</b>	State	Nation	State	Nation	State	Nation	
	<b>51.2</b>	47.4	<b>49.2</b>	46.8	<b>48.4</b>	45.5	
<b>Male</b> <b>2,734</b>	State	Nation	State	Nation	State	Nation	
	<b>51.6</b>	46.5	<b>53.0</b>	48.9	<b>48.0</b>	43.9	

<b>Sophomores by Ethnicity</b>	<b>Mean Critical Reading</b>		<b>Mean Mathematics</b>		<b>Mean Writing</b>	
	<b>State</b>	National	<b>State</b>	National	<b>State</b>	National
<b>American Indian</b>	<b>45.6</b>	40.0	<b>43.9</b>	39.6	<b>41.7</b>	37.3
<b>Asian</b>	<b>48.7</b>	46.8	<b>50.9</b>	50.7	<b>45.5</b>	44.7
<b>Black</b>	<b>39.1</b>	37.5	<b>37.4</b>	36.5	<b>37.1</b>	35.9
<b>Hispanic</b>	<b>41.7</b>	37.6	<b>41.0</b>	38.3	<b>39.2</b>	36.5
<b>White</b>	<b>47.8</b>	46.3	<b>46.5</b>	45.9	<b>44.0</b>	43.2
<b>Other</b>	<b>43.2</b>	41.5	<b>40.7</b>	41.0	<b>39.3</b>	39.2
<b>No Response</b>	<b>42.4</b>	38.6	<b>41.1</b>	38.7	<b>39.2</b>	36.8

Juniors by Ethnicity	Mean Critical Reading		Mean Mathematics		Mean Writing	
	State	National	State	National	State	National
American Indian	<b>50.7</b>	45.2	<b>50.1</b>	45.1	<b>47.3</b>	42.2
Asian	<b>50.7</b>	50.5	<b>54.3</b>	55.4	<b>48.9</b>	49.2
Black	<b>44.0</b>	40.6	<b>41.7</b>	39.9	<b>41.6</b>	39
Hispanic	<b>45.5</b>	41.2	<b>45.3</b>	42.5	<b>43.1</b>	40
White	<b>53.2</b>	50.5	<b>52.5</b>	51	<b>49.9</b>	47.6
Other	<b>52.9</b>	46	<b>50.9</b>	46.2	<b>49.9</b>	43.7
No Response	<b>48.1</b>	42.6	<b>47.1</b>	43	<b>44.8</b>	40.6

SAT

# SAT Test Takers



■ 2012	1319	104	144	120	73	823	38	17
--------	------	-----	-----	-----	----	-----	----	----

SAT by Gender	Mean Critical Reading		Mean Mathematics		Mean Writing	
	State	National	State	National	State	National
<b>Female 718</b>	<b>563</b>	488	<b>543</b>	490	<b>547</b>	486
<b>Male 601</b>	<b>577</b>	495	<b>590</b>	524	<b>536</b>	474

SAT by Ethnicity	Mean Critical Reading		Mean Mathematics		Mean Writing	
	State	National	State	National	State	National
<b>All Test Takers</b>	<b>569</b>	491	<b>564</b>	505	<b>542</b>	481
<b>American Indian</b>	<b>575</b>	479	<b>556</b>	484	<b>540</b>	458
<b>Asian</b>	<b>554</b>	519	<b>612</b>	573	<b>548</b>	522
<b>Black</b>	<b>489</b>	424	<b>480</b>	425	<b>464</b>	412
<b>Hispanic</b>	<b>538</b>	443	<b>531</b>	458	<b>510</b>	437
<b>White</b>	<b>588</b>	523	<b>574</b>	533	<b>558</b>	508
<b>Other</b>	<b>540</b>	495	<b>544</b>	500	<b>514</b>	485
<b>No Response</b>	<b>535</b>	459	<b>520</b>	463	<b>482</b>	442

