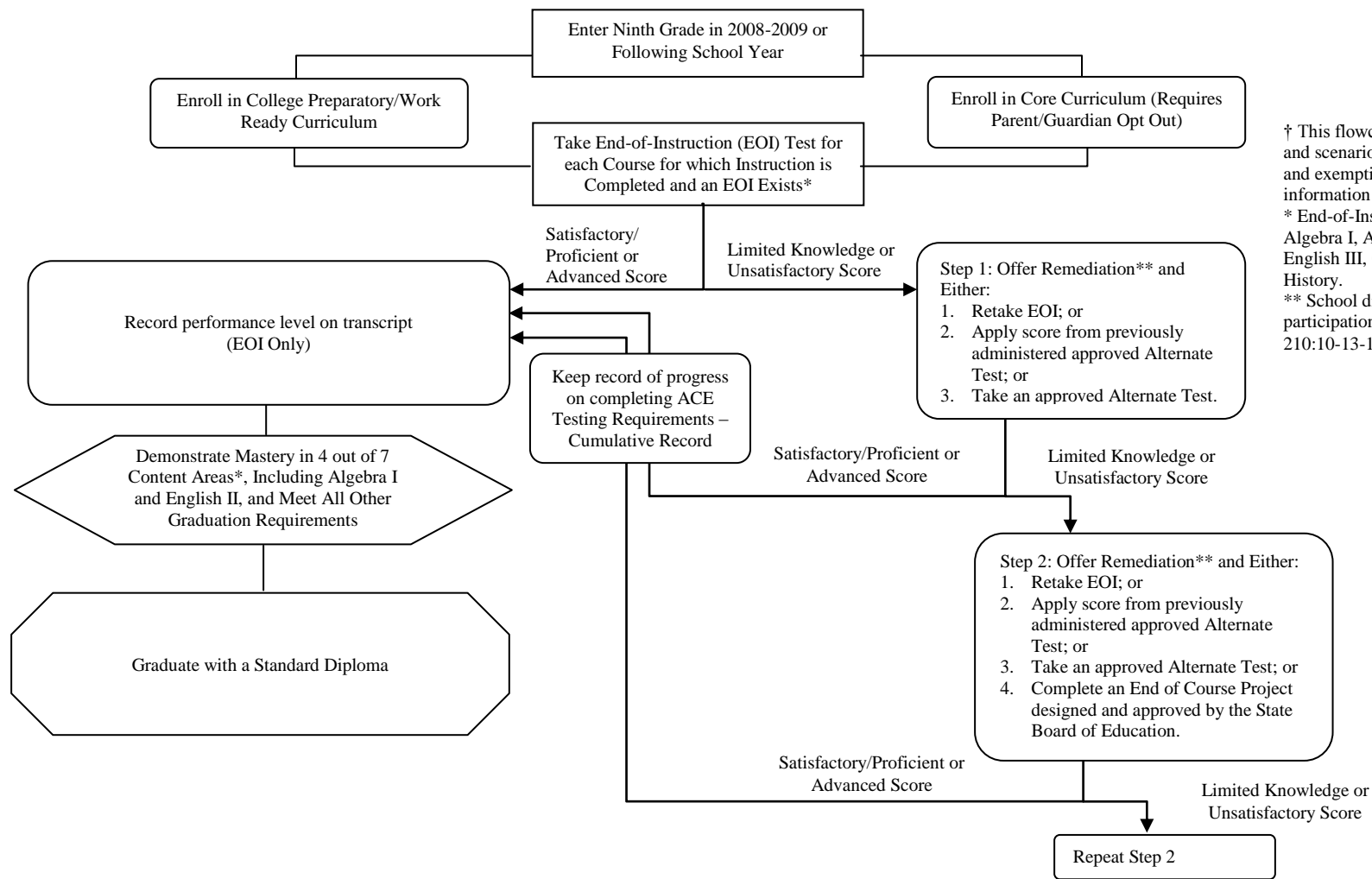




Achieving Classroom Excellence Act (ACE)

ACE Testing Flowchart†



† This flowchart represents typical situations and scenarios. For special cases, exceptions, and exemptions, please refer to the information on the back of this page.
 * End-of-Instruction Tests are available for Algebra I, Algebra II, Biology I, English II, English III, Geometry, and United States History.
 ** School districts will document refusal of participation in remediation. (OAC 210:10-13-16)

ACE Testing Exceptions and Exemptions

Students who transfer from out of state

Enter the ninth grade in 2008-2009 or Following School Year
in Another State

Complete instruction of Algebra I, English II, or any other
course needed to meet ACE graduation testing requirements
while in other state

Transfer to an Oklahoma Public High School

Either:

1. Submit documentation of passing a state-administered EOI or similar equivalent assessment in other state; or
2. Take EOI in Oklahoma; or
3. Apply score from previously administered approved Alternate Test; or
4. Take an approved Alternate Test; or
5. Complete an End of Course Project designed and approved by the State Board of Education.

Satisfactory/Proficient or
Advanced Score

Limited Knowledge or
Unsatisfactory Score

Record performance level on
transcript (EOI only); Keep record of
progress on completing ACE Testing
Requirements – Cumulative Record
(if necessary); and Continue through
ACE Testing Flowchart

Offer Remediation**
and Repeat Options

Students who transfer from private school or home school

Enter the ninth grade in 2008-2009 or Following School Year
in private school or home school

Complete instruction in Algebra I, English II, or any other
course needed to meet ACE graduation testing requirements
while in private school or home school

Transfer to an Oklahoma Public High School

Either:

1. Take EOI; or
2. Apply score from previously administered approved Alternate Test; or
3. Take an approved Alternate Test; or
4. Complete an End of Course Project designed and approved by the State Board of Education.

Satisfactory/Proficient or
Advanced Score

Limited Knowledge or
Unsatisfactory Score

Record performance level on
transcript (EOI only); Keep record of
progress on completing ACE Testing
Requirements – Cumulative Record
(if necessary); and Continue through
ACE Testing Flowchart

Offer Remediation**
and Repeat Options

Students who receive course credit through Proficiency Based Promotion (PBP)

Enter the ninth grade in 2008-2009 or Following School Year

Earn credit for Algebra I, English II, or any other course needed
to meet ACE graduation testing requirements through PBP

Either:

1. Take EOI; or
2. Apply score from previously administered approved Alternate Test; or
3. Take an approved Alternate Test; or
4. Complete an End of Course Project designed and approved by the State Board of Education.

Satisfactory/Proficient or
Advanced Score

Limited Knowledge or
Unsatisfactory Score

Record performance level on
transcript (EOI only); Keep record of
progress on completing ACE Testing
Requirements – Cumulative Record
(if necessary); and Continue through
ACE Testing Flowchart

Offer Remediation**
and Repeat Options

Students who do not have the opportunity to take a required EOI without extending their date of graduation

Either:

1. Apply score from previously administered approved Alternate Test; or
2. Take an approved Alternate Test; or
3. Complete an End of Course Project designed and approved by the State Board of Education.

Students who have an Individualized Education Program (IEP)

Mastery in required subject areas may be demonstrated through a modified proficiency score on the state assessment(s) as established by the IEP team. Any deviation from the standard conditions, accommodations, or proficiency score on the state assessment(s) must be established with the student's IEP and denoted on the student's ACE Demonstration of Mastery Cumulative Record.

Students with extenuating circumstances

Students with extenuating circumstances (circumstances which are unexpected, significantly disruptive, beyond a student's control, and which may have reasonably affected his/her academic performance) may apply for a waiver for one or more of the steps listed in the ACE Testing Flowchart for an individual EOI from the Oklahoma State Board of Education.