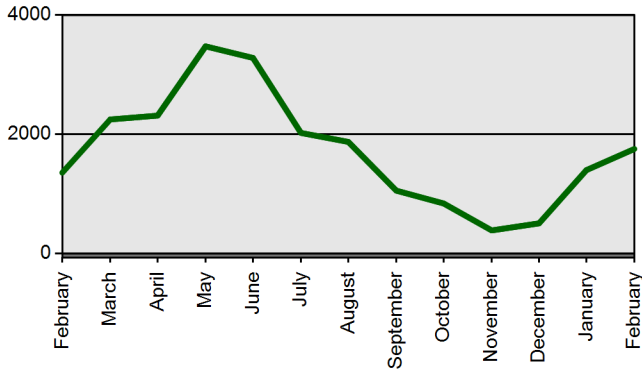


TEACHER CERTIFICATION PRODUCTION REPORT

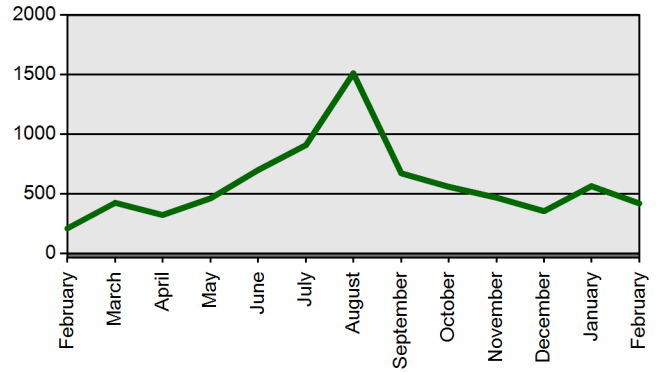
State Board of Education Meeting Thursday, March 29, 2012

	Current Total Feb 1 2012-Feb 29 2012	Previous Total Feb 1 2011-Feb 28 2011
Certificates Printed	1809	1413
Applications Received	2354	1611
Advisement Letters	538	381
Scanned Documents	7416	3396
Fingerprints	1461	1315
Walk-ins	448	235

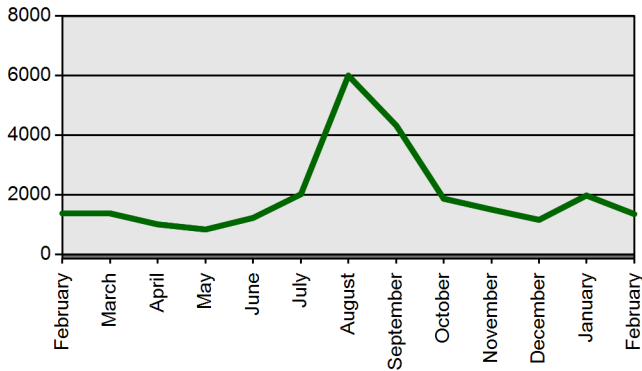
Certificates Printed



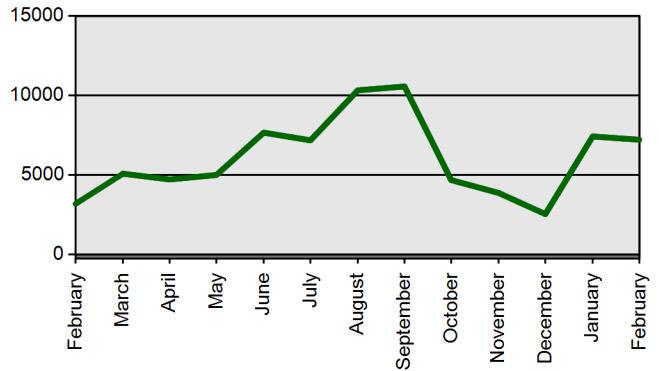
Walk-ins



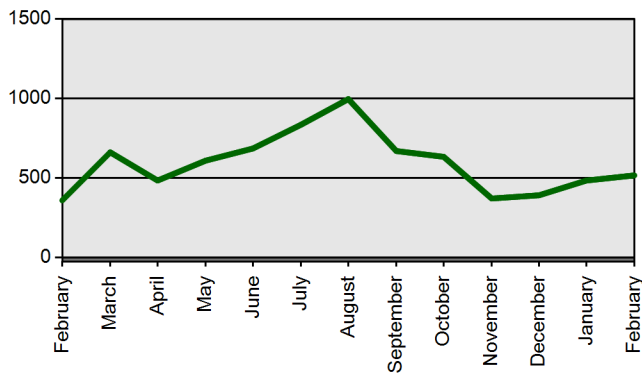
Fingerprints



Scanned Documents



Advisement Letters



Applications Received (Online & Total)

