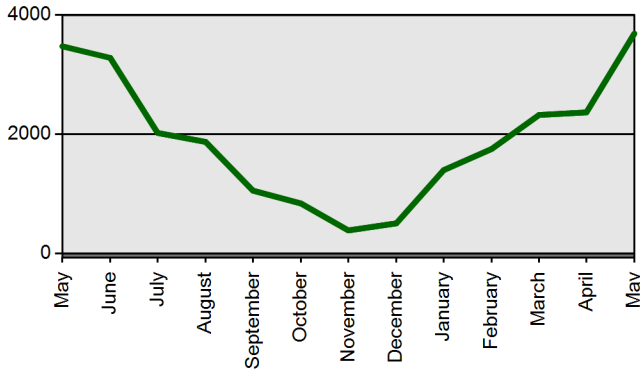


TEACHER CERTIFICATION PRODUCTION REPORT

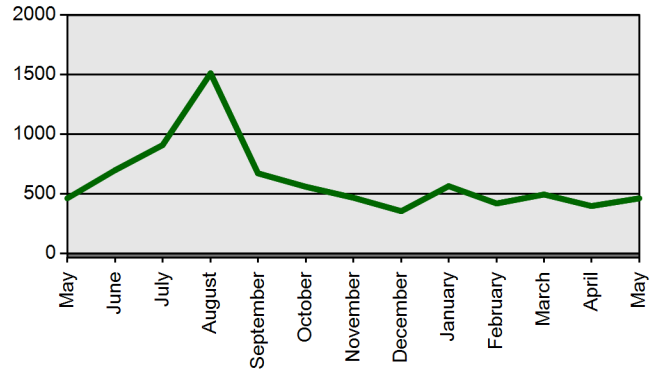
State Board of Education Meeting Thursday, June 28, 2012

	Current Total	Previous Total
	May 1 2012-May 31 2012	May 1 2011-May 31 2011
Certificates Printed	3742	3533
Applications Received	4574	4416
Advisement Letters	774	629
Scanned Documents	8251	5187
Fingerprints	1074	626
Walk-ins	489	489

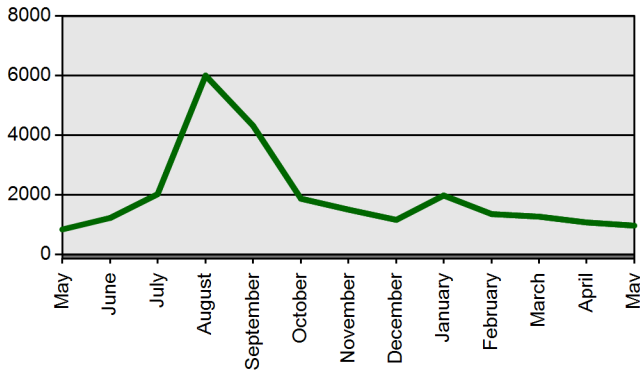
Certificates Printed



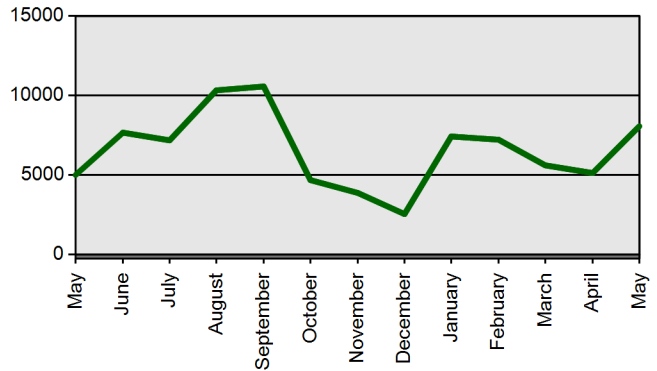
Walk-ins



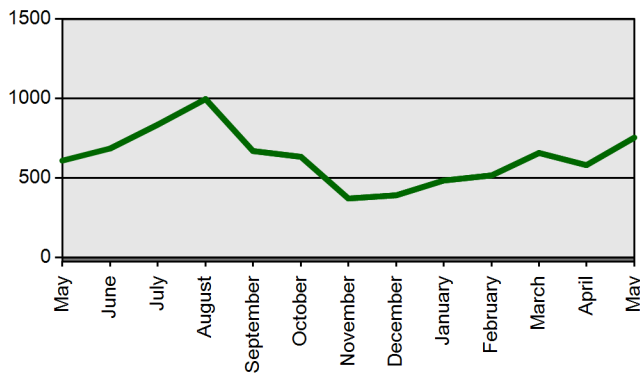
Fingerprints



Scanned Documents



Advisement Letters



Applications Received (Online & Total)

