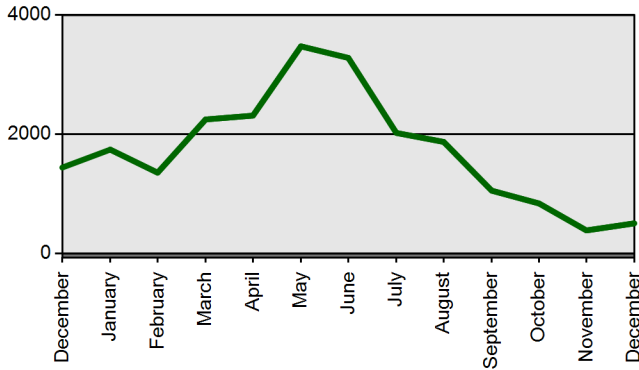


TEACHER CERTIFICATION PRODUCTION REPORT

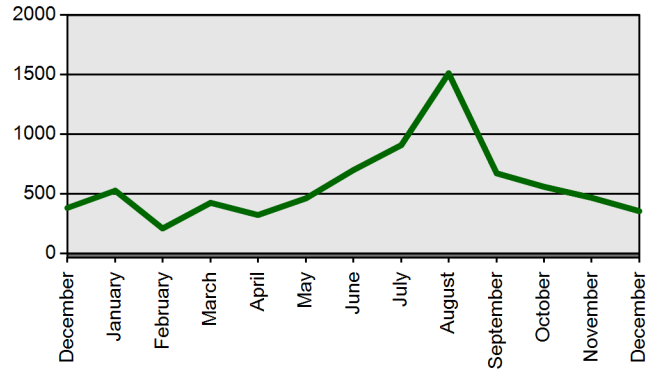
State Board of Education Meeting Thursday, January 26, 2012

	Current Total	Previous Total
	Dec 1 2011-Dec 31 2011	Dec 1 2010-Dec 31 2010
Certificates Printed	562	1498
Applications Received	831	918
Advisement Letters	413	312
Scanned Documents	2743	4353
Fingerprints	1271	1776
Walk-ins	380	410

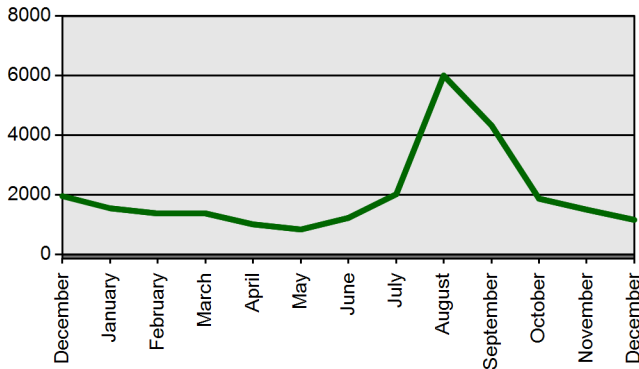
Certificates Printed



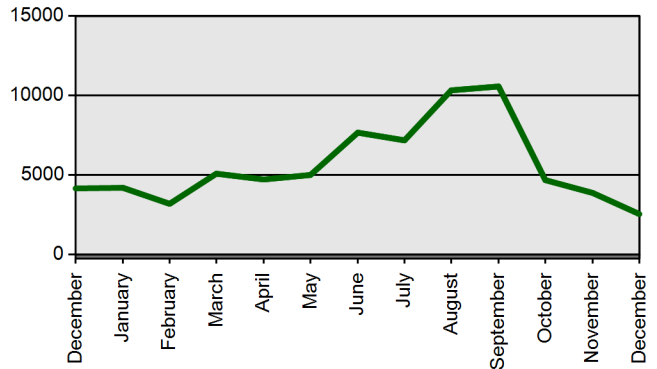
Walk-ins



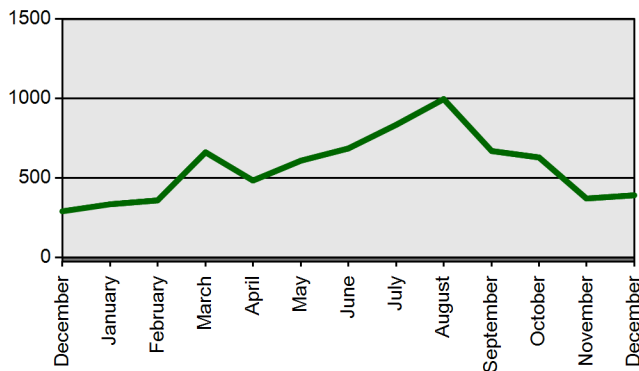
Fingerprints



Scanned Documents



Advisement Letters



Applications Received (Online & Total)

