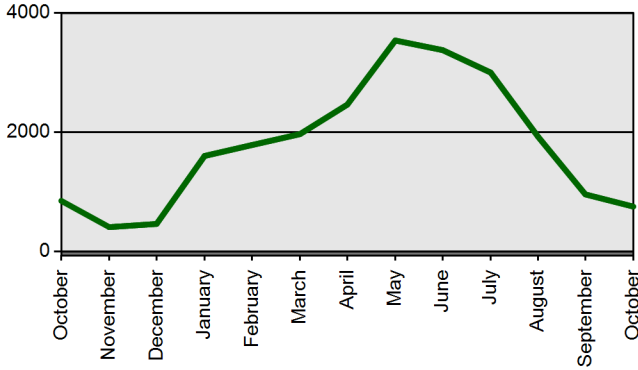


TEACHER CERTIFICATION PRODUCTION REPORT

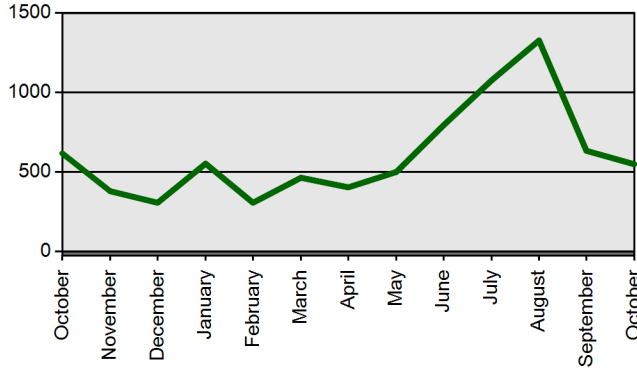
State Board of Education Meeting Wednesday, November 20, 2013

	Current Total	Previous Total
	Oct 1 2013-Oct 31 2013	Oct 1 2012-Oct 31 2012
Certificates Printed	805	906
Applications Received	1134	1160
Advisement Letters	560	631
Scanned Documents	7796	5295
Fingerprints	2732	2141
Walk-ins	567	638

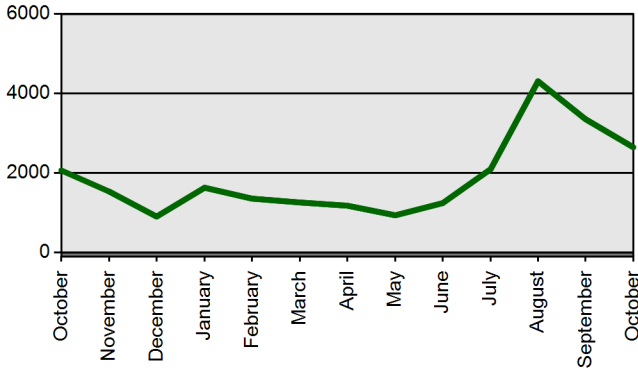
Certificates Printed



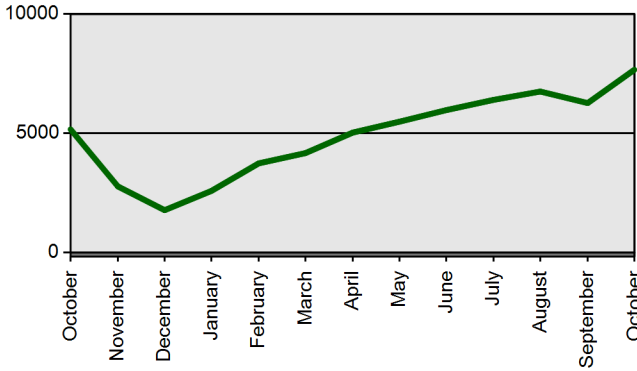
Walk-ins



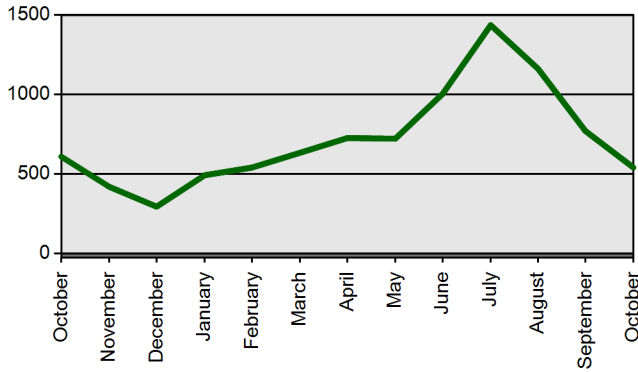
Fingerprints



Scanned Documents



Advisement Letters



Applications Received (Online & Total)

